



UNIVERSITY OF MEDICAL SCIENCES
Laje Road, Ondo, Ondo State

The case for Medical Universities in Nigeria:

presentation at biennial scientific conference of MDCAN

PROFESSOR FRIDAY E. OKONOFUA

Vice-Chancellor

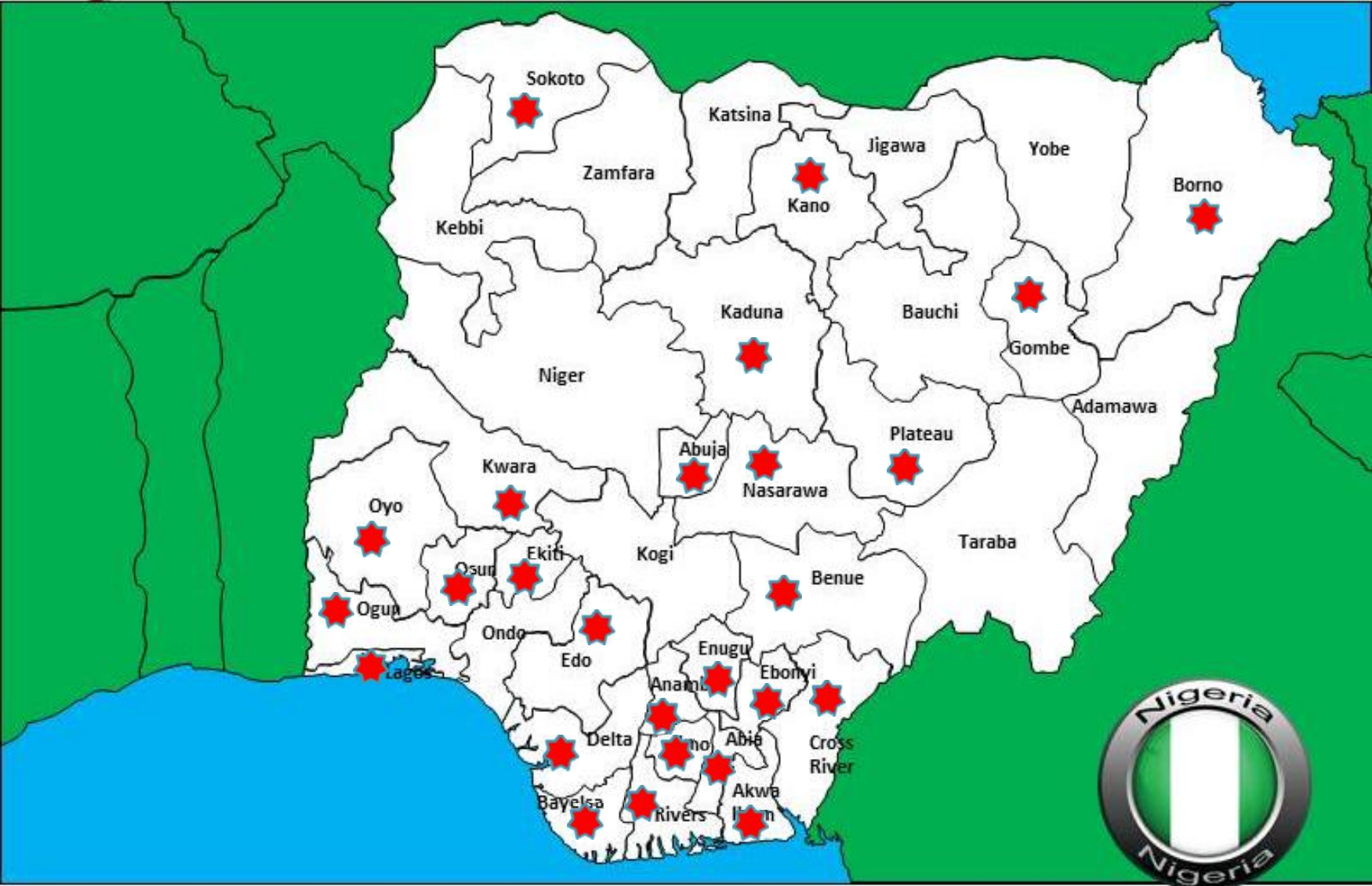
PROFESSOR ODUNAYO M. OLUWATOSIN

Deputy Vice Chancellor (Administration)

Outline:

- ▶ **Pioneering a world class University**
- ▶ **What are the Advantages of a medical university**
- ▶ **Challenges**
- ▶ **Recommendations and tips**

Nigerian Medical/Dental Schools by State

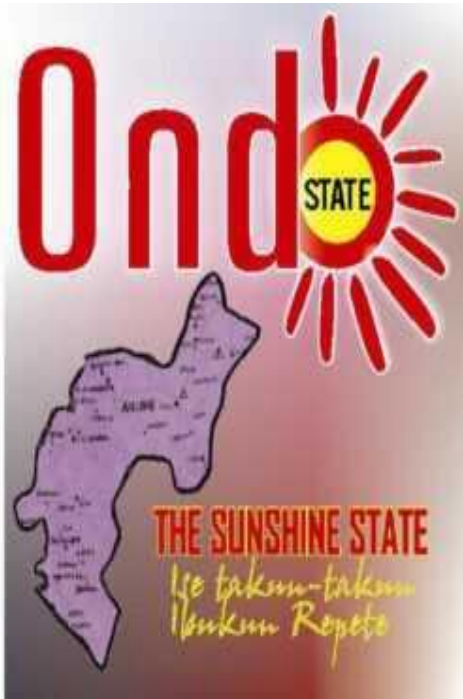


★ States with accredited Medical/ Dental Programs



Ondo State: January 2014

- ▶ Population 2010: 3,895,367
- ▶ Doctor to patient ratio: 1:14,000
- ▶ Hospitals: 754 (includes Hospitals, Clinics and Medical Centers)
- ▶ Universities: 8
- ▶ Professors: State with the 2nd highest number of professors produced (NUC, 2010)



Brief History of the University

- ▶ December 8, 2014, the Governor of Ondo State, Dr. Olusegun Mimiko, signed the Ondo State University of Medical Sciences Law.
- ▶ March 2015, the first Vice-Chancellor and Registrar were appointed
- ▶ April 22, 2015: UNIMED was recognised by the NUC as the 40th State University and the 139th University in Nigeria.

Brief History of the University

- ▶ **November 16, 2015: The Governing Council of the University under the chairmanship of Emeritus Professor Oladipupo Akinkugbe, FAS, CFR was inaugurated.**
- ▶ **March 5, 2016: 192 pioneers students, spread across five programmes (Medicine, Dentistry, Anatomy, Physiology and Biochemistry) were matriculated.**

Objectives for Establishing UNIMED

- ▶ Prepare students for leading professional roles in ALL disciplines in the health sector in Nigeria and globally
- ▶ Offer the best tertiary health care for all forms of diseases, disabilities and deformities prevalent nationally/internationally
- ▶ Promote research and creative work for transforming and improving the health of Nigerians and the world at large

Objectives for Establishing UNIMED

- ▶ **Develop human and physical resources of the University to some of the best attainable standards in the world**
- ▶ **Promote the health and social well-being of Nigerians through engagement, outreach services and public education.**

Vision of UNIMED

The vision of UNIMED is to be a thriving medical and health Sciences University locally, nationally and internationally recognized for excellence and innovation in health education and research and for ability to translate research findings for the improvement of health in communities with high burden of diseases.

Mission of UNIMED

The mission of the University of Medical Sciences (UNIMED) is to provide exceptional quality and comprehensive health care and integrated education and research in health-related sciences, to expand access to compassionate and high quality health care for underserved populations, and to lead the scientific pathway for reducing the burden of diseases in our areas of operation

Core values

▶ **T**ransparency

▶ **E**fficiency

▶ **A**ccountability

UNIMED Academic Faculties

- ▶ Faculty of Science
- ▶ Faculty of Basic Medical Sciences
- ▶ Faculty of Basic Clinical Sciences
- ▶ Faculty of Clinical Sciences
- ▶ Faculty of Dental Sciences
- ▶ Faculty of Allied Health Sciences

UNIMED Academic Courses

- ▶ Faculty of Science: Biological Sciences (Mineral and Environmental Biology, Microbiology and Plant Biology and Biotechnology), Chemistry, Mathematics and Physics
- ▶ Faculty of Basic Medical Sciences: Anatomy, Biochemistry, Physiology
- ▶ Faculty of Clinical Sciences: Medicine
- ▶ Faculty of Dental Sciences: Dentistry
- ▶ Faculty of Allied Health Sciences: Nursing and Physiotherapy

ADMINISTRATIVE FACILITIES

Vice Chancellor's Office (Temporary)



UNIMED Odosida Campus



CLINICAL FACILITIES yet to be fully harmonised and integrated by enabling decree

- ▶ **Gani Fawehinmi diagnostic centre**
- ▶ **Mother and Child hospital**
- ▶ **Trauma and Surgical care centre**
- ▶ **Kidney care centre**

Trauma and Surgical Center



Trauma and Surgical Center

- ▶ **The Trauma/ Surgical Center provides access to specialist medical and nursing care**
- ▶ **Equipped and staffed to care for patients with major traumatic injuries such as falls, motor vehicle collisions, gunshot wounds, etc.**
- ▶ **Full range of specialists and equipment available 24 hours a day**

Trauma and Surgical Center

- ▶ **Specialist care includes;**
 - ▶ Emergency medicine
 - ▶ Trauma and Orthopaedic surgery
 - ▶ Ear, Nose & Throat (Otorhyngolaryngology)
 - ▶ Radiology
 - ▶ General surgery
 - ▶ Paediatric surgery
 - ▶ Urological surgery
 - ▶ Plastic and Reconstructive surgery
 - ▶ Critical care
 - ▶ **Neurosurgery and Cardiothoracic surgery**
 - ▶ Dental surgery

Mother and Child Hospital



Mother and Child Hospital

- ▶ **The world class hospital offers exceptional and qualitative services for pregnant women, nursing mothers and children under five years free of charge**
- ▶ **The 100 bed facility has six consulting rooms, four nurses' stations, medical laboratory services, pharmacy services, etc.**

Gani Fawehinmi Diagnostic Centre



Gani Fawehinmi Diagnostic Centre

- ▶ This fully equipped Diagnostic Center boasts up to date technology including an MRI, CT scanner, ultrasound and a wide variety of laboratory tests
- ▶ Available radiologists who interpret results of radiographic tests immediately to enhance diagnosis and management of illnesses

Kidney Care Centre



Kidney Care Center

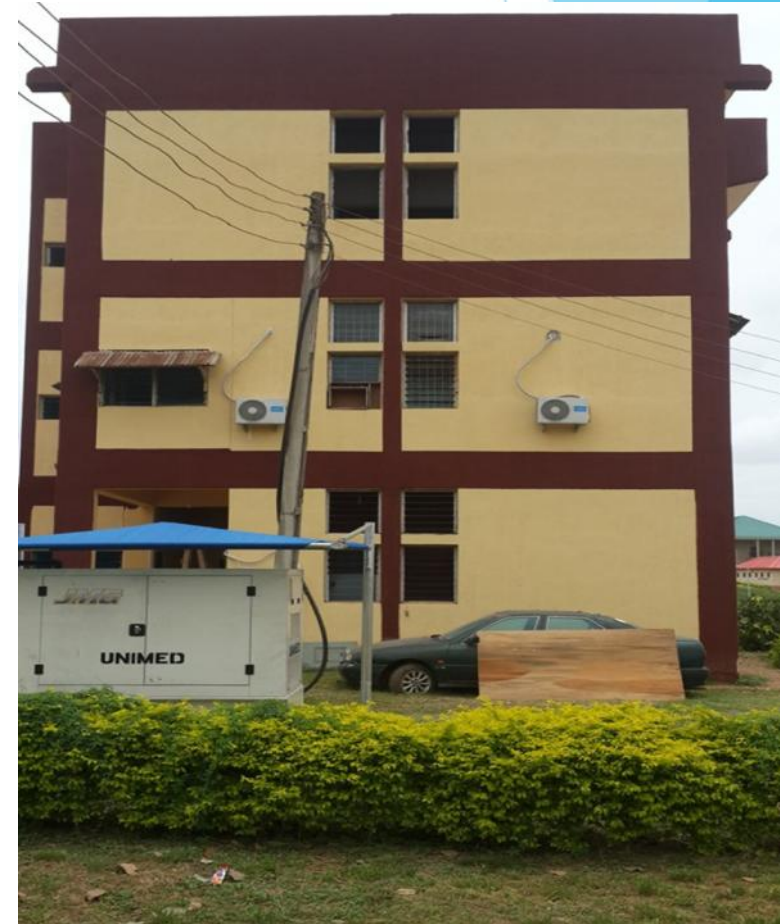
- ▶ **State of the art Center that focuses on the curative aspect and also engages in preventive healthcare services**
- ▶ **Other services offered include screening of patient's health, education and community outreach**
- ▶ **The Center has performed over 3,000 dialysis sessions since its inception in 2014**

Medical Wards



ACADEMIC FACILITIES

Building at Adeyemi College of Education, Ondo City, Ondo State



Animal House



Anatomy Department



Odosida Campus



UNIMED Non-teaching Departments

- ▶ Vice Chancellors Office
- ▶ Registrars Office
- ▶ Bursary
- ▶ Library
- ▶ Advancement and Documentation
- ▶ Public Relations
- ▶ Security
- ▶ Audit
- ▶ ICT
- ▶ Student Affairs

UNIMED Non-teaching Departments

- ▶ **Central Store**
- ▶ **Counselling and Human Development**
- ▶ **Council Affairs**
- ▶ **Physical Planning**
- ▶ **Works and Services**

Summary of UNIMED Students by Level

SUMMARY	Male	Female	Total
100 Level	179	310	489
200 Level	82	76	158
300 Level	37	17	54
Total	298	403	701



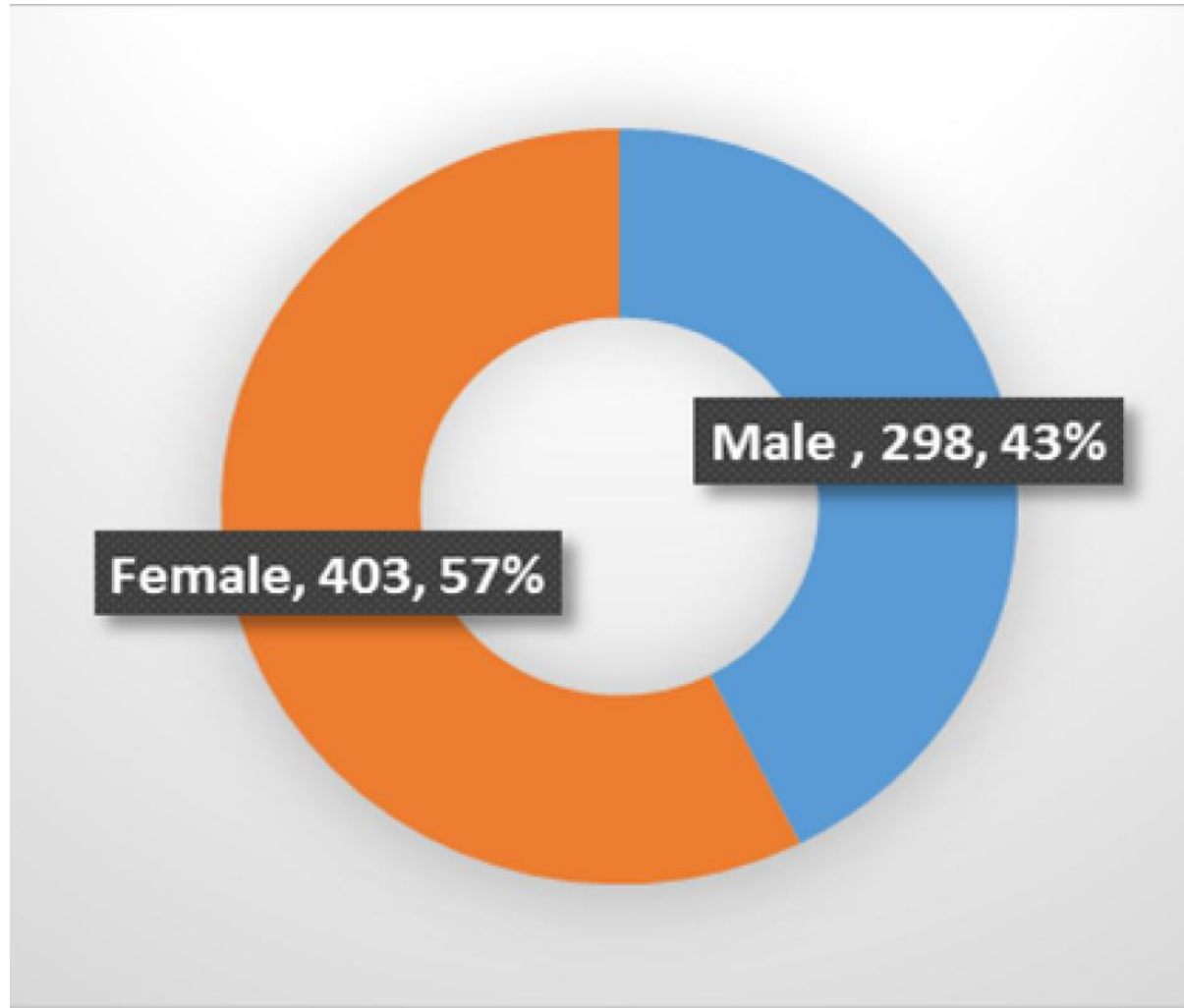
Distribution of Students by Faculty

Faculty	Frequency	Percentage
Basic Medical Sciences	172	24.5
Clinical Sciences	170	24.3
Dental Sciences	60	8.6
Science	174	24.8
Allied Health Sciences	125	17.8
Total	701	100

Session	WEEKS																										
	2	4	6	8	10	12	14	16	18	20	22	24	26	28	30	32	34	36	38	40	42	44	46	48	50	52	
200L	GIP		Integrated core Basic Science I				Mid semester vacation	Integrated core Basic Science II				Dentistry as a profession		End of semester vacation	Integrated core Basic Science III				Mid semester vacation	Integrated core Basic Science IV and COM I)				Inter-disciplinary health care delivery		End of session vacation	
300L	Oral biology		Integrated clinical application of basic science				Revision of core basic sciences				Self-study revision	BDS PART I Exam	VACATION	Clinical introductory posting		Integrated Basic Clinical posting I				Operative Techniques, Prosthetic Techniques and Dental Biomaterial Science				VACATION			
400L	Operative Techniques, Prosthetic Techniques and Dental Biomaterial Science		Self-revision and BDS PART Ila exam				Integrated Basic Clinical posting II				Medicine Paediatrics Surgery				Self-revision and BDS PART Iib exam		Integrated Basic Clinical posting III (revision)		Self-revision	BDS PART III Exam		VACATION					
500L	Integrated lectures in Oral & Maxillofacial Pathology, Radiology, Oral Medicine and Child Dental health				VACATION	Integrated System Based Lectures in the Faculty of Dental Sciences																		VACATION			
Clinical Postings in Oral & Maxillofacial Pathology, Radiology, Oral Medicine and Child Dental health				Clinical Postings in Oral & Maxillofacial Pathology, Radiology, Oral Medicine and Child Dental health																							
600L	Integrated System Based Lectures in OMS, RD, and PCD				Elective posting	Community and street Dentistry				VACATION	Integrated System Based Lectures in OMS, RD, and PCD				Self-revision	BDS PART IV Exam											
Clinical postings in OMS, RD, and PCD				Clinical postings in OMS, RD, and PCD				Clinical postings in OMS, RD, and PCD																			

Session	WEEKS																											
	2	4	6	8	10	12	14	16	18	20	22	24	26	28	30	32	34	36	38	40	42	44	46	48	50	52		
200L	GIP	Integrated core Basic Science I				Mid semester vacation	Integrated core Basic Science II				Medicine as a profession				End of semester vacation	Integrated core Basic Science III				Mid semester vacation	Integrated core Basic Science IV and COM I				Inter-disciplinary health care delivery		End of session vacation	
300L	Integrated core Basic Science V and COM II		Integrated clinical application of basic science						Revision of core basic sciences		Self-study revision		MBBS PART I Exam		VACATION		Clinical introductory posting		Integrated Basic Clinical posting I				Integrated system based lectures I		Medicine I and Surgery I		VACATION	
400L	Integrated system based lectures II									Integrated system based lectures III								Integrated Basic Clinical posting III (revision)		Self-revision		MBBS PART II Exam		VACATION				
	Medicine I and Surgery I			Integrated Basic Clinical posting II						Medicine II and Surgery II						COM III												
500L	Mental Health I Special Posting I (Anaesthesia and Radiology)		Paediatrics OBG						COM IV (Rural posting)						Paediatrics OBG				Self-revision		MBBS PART III Exam		VACATION					
600L	Mental Health II Special Posting II (Ophthalmology and ORL)		Family Medicine Geriatric Medicine/ Elective posting				Infectious diseases		Medicine III Surgery III				VACATION		Medicine III Surgery III		COM V				Self-revision		MBBS PART IV Exam					

Gender Distribution of Students



Regular sessions

- ▶ Statutory departmental, faculty and senate meetings
- ▶ Monday morning meetings
- ▶ Weekly research seminars
- ▶ Public enlightenment lectures



UNIVERSITY OF MEDICAL SCIENCES
Laje Road, Ondo City, Ondo State.

The Vice-Chancellor,
On behalf of Senate, Staff and Students of the University
cordially invites the General Public and Friends of the University to the

Public Lecture

TITLED

SOME EFFICACIOUS NIGERIAN ANTI-CANCER HERBAL REMEDIES

GUEST LECTURER

Emeritus Prof. Joseph Ibomeim Okogun, PhD, DIC, FAS, FAAS, FRSC, FCSN, FNSP
(Former Director, National Institute for Pharm. Research and Development Consultant Professor,
Phytochemistry. Consultant, Pax Herbal Clinics and Research laboratories,
Benedictine Monastery, Ewu-Esan, Edo State)

UNDER THE DISTINGUISHED CHAIRMANSHIP OF

Professor Friday Okonofua, FAS
Vice-Chancellor, University of Medical Sciences, Ondo City.

SPECIAL GUEST OF HONOUR

Arabinrin Betty Anyanwu - Akeredolu
Wife of the Governor, Ondo State

Date: Thursday, August 31, 2017 | **Time:** 10:00a.m. prompt

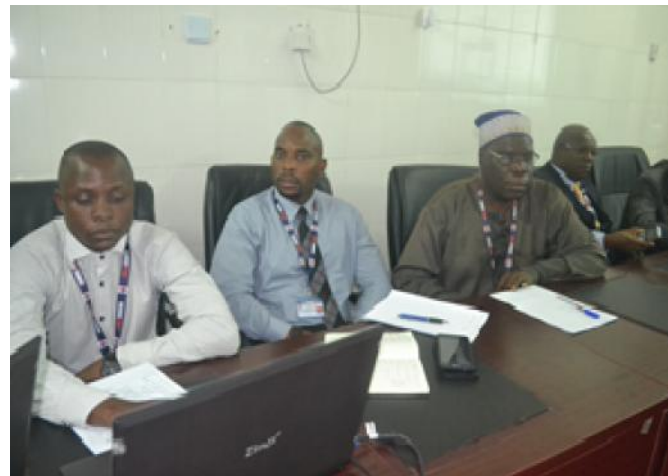
Venue: Main Auditorium, University of Medical Sciences,
Odosida Campus, Oke-Igbala Street, Ondo City

All Guests to be seated by 9:30am

Dr. (Mrs.) Eunice F. Oyebade, mni
Registrar & Secretary to Council

Development of the UNIMED Strategic Plan

- ▶ The development of a strategic plan was accorded top priority
- ▶ Prof. Peter Okebukola was appointed to facilitate the process of developing a comprehensive plan
- ▶ All University administrators, faculty and staff participated to provide an opportunity for maximum input and buy-in



Administrative/ Staff Training and Workshops

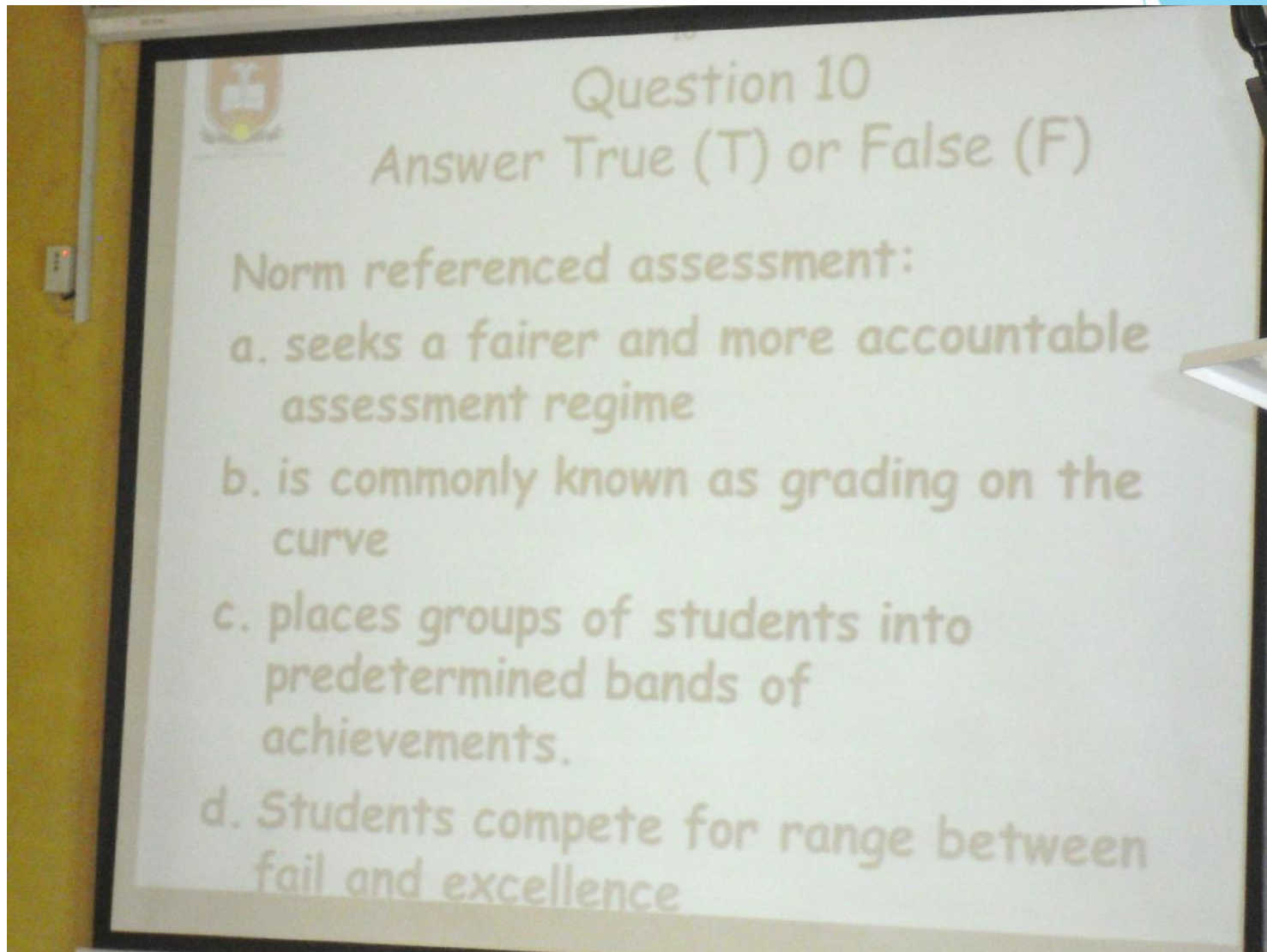
- ▶ A strategy the University has identified for achieving its milestones is unrelenting staff training, re-orientation and staff motivation
- ▶ Several staff training sessions have been conducted and led by highly acclaimed national and international academicians



Workshop on pedagogy



Workshop on pedagogy

A photograph of a whiteboard with a question and four options. The whiteboard is mounted on a wall and has a small logo in the top left corner. The text on the whiteboard is as follows:

Question 10
Answer True (T) or False (F)

Norm referenced assessment:

- a. seeks a fairer and more accountable assessment regime
- b. is commonly known as grading on the curve
- c. places groups of students into predetermined bands of achievements.
- d. Students compete for range between fail and excellence

Technical experts' consultative meetings



Fundraising/ Friends of UNIMED

- ▶ Fund-Raising Committee and the Advancement and Documentation Unit were created to spearhead the University's fundraising efforts
- ▶ Several fundraising strategies have been identified, and the Friends of UNIMED Fund was launched in Ondo and Abuja with positive results



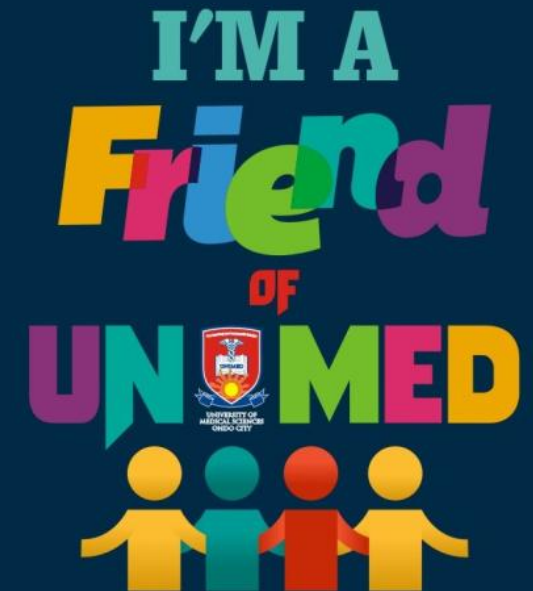
LAUNCHING



“The idea is to generate a cohort of friends for the university who will make regular, small and determined financial contributions towards the implementation of specific projects in the University”



UNIVERSITY OF MEDICAL SCIENCES
Laje Road, Ondo City, Ondo State



Advantages

- ▶ Development and operation of closely knit curricula that will enhance the much needed health sector relationship and collaboration.
- ▶ Formulation of policies based on proper perspective and understanding of medical problems
- ▶ Enhanced collaboration of researchers who speak the same language and are within close proximity to each other.
- ▶ Funding, like ETF, World bank etc tailored for medical development.
- ▶ Deployment of major part of equipment budget to high end implements dedicated to solving medical miseries.

Challenges

- ▶ The University requires substantially larger amount of funds for development as compared to older and more established universities
- ▶ However, several capital projects remain outstanding due to lack of funds
- ▶ Policy changes and delay in resolving outstanding issues
- ▶ **Inter-professional rivalry.**

Recommendations

- ▶ **Establishment of medical universities**
- ▶ **Keep the focus**
- ▶ **Ensure medical representation especially in vital areas University.**
- ▶ **Ensure leadership role of medical academic within the system e.g. position of the Vice Chancellor**